

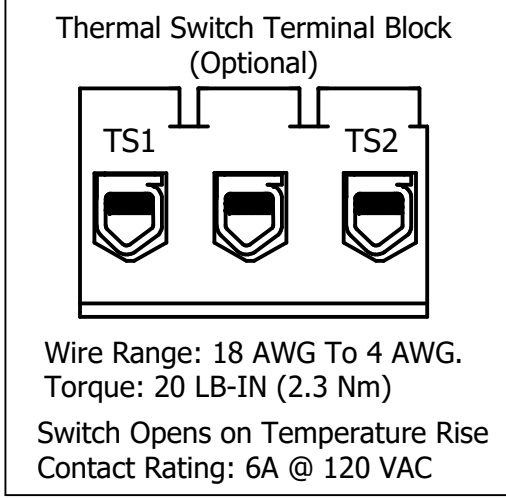
HGP Open Part Number	Schematic Drawing #	Approx Weight (LBS)
HGP0100AW0S000#	28697-1S	200
HGP0100AW0C000#	28697	205
HGP0100AW0C*00#	29597-PQ	207

HGP Part Number	HorsePower (HP)	kVar	Maximum Amps (A)	Harmonic	Voltage (V)	Hz.	Phase
HGP0100AW----	100	30	124	5th	480	60	3

HGP Eclosed Type 1 Part Number	Schematic Drawing #	Approx Weight (LBS)
HGP0100AW1S000#	28697-1S	295
HGP0100AW1C000#	28697	300
HGP0100AW1C*00#	29597-PQ	301

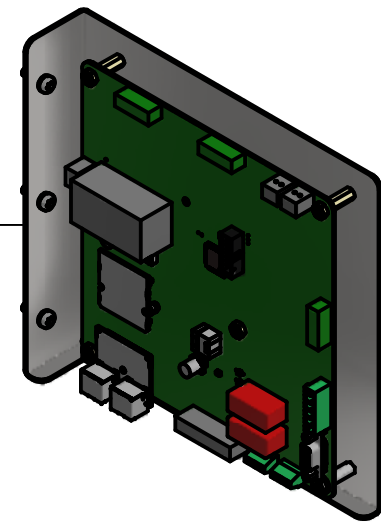
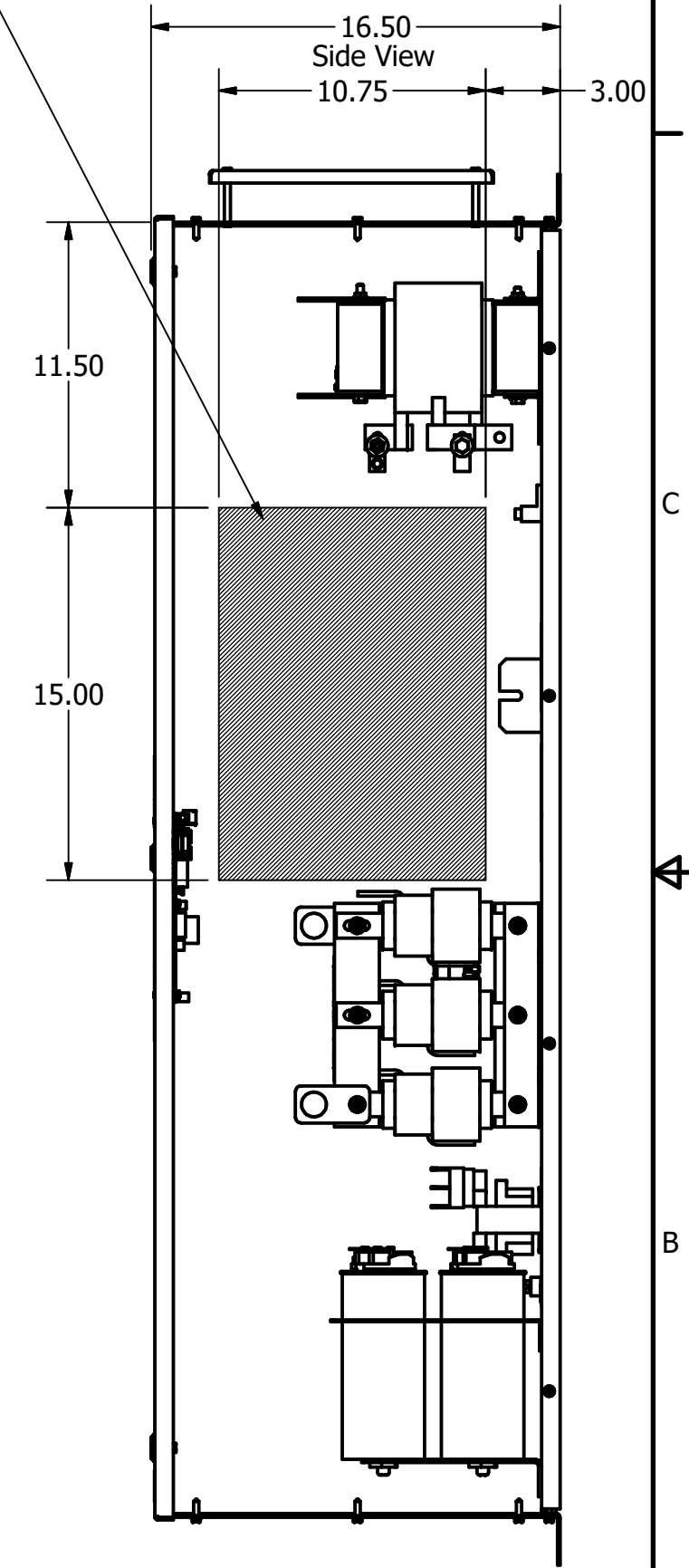
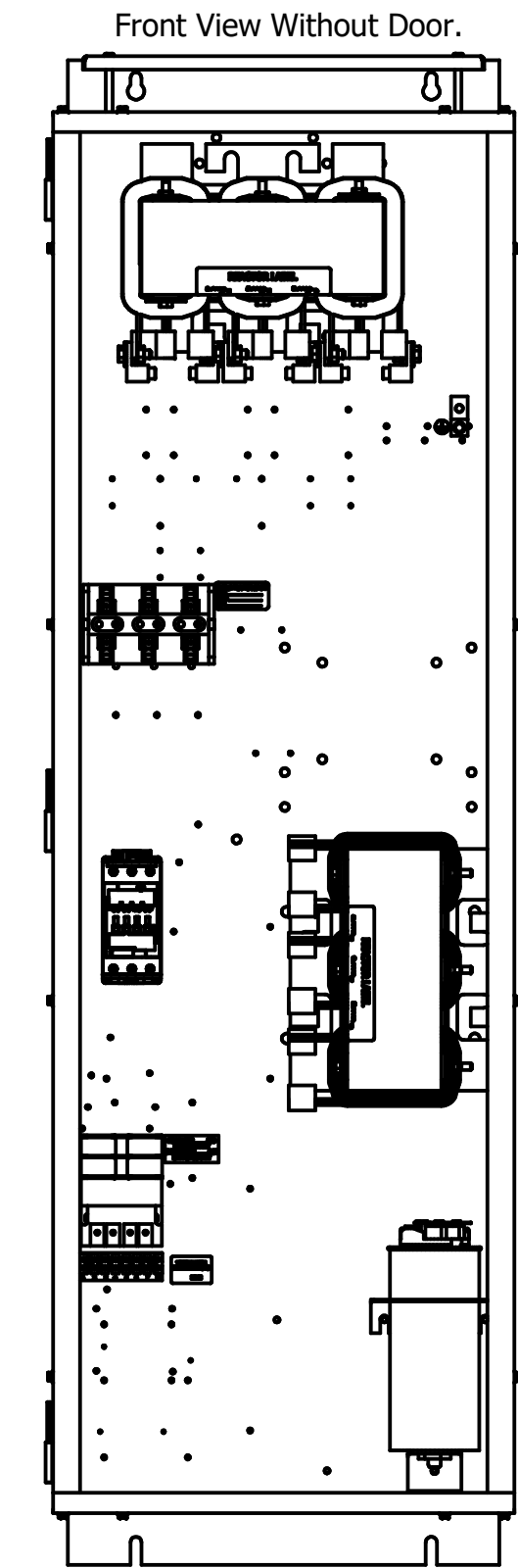
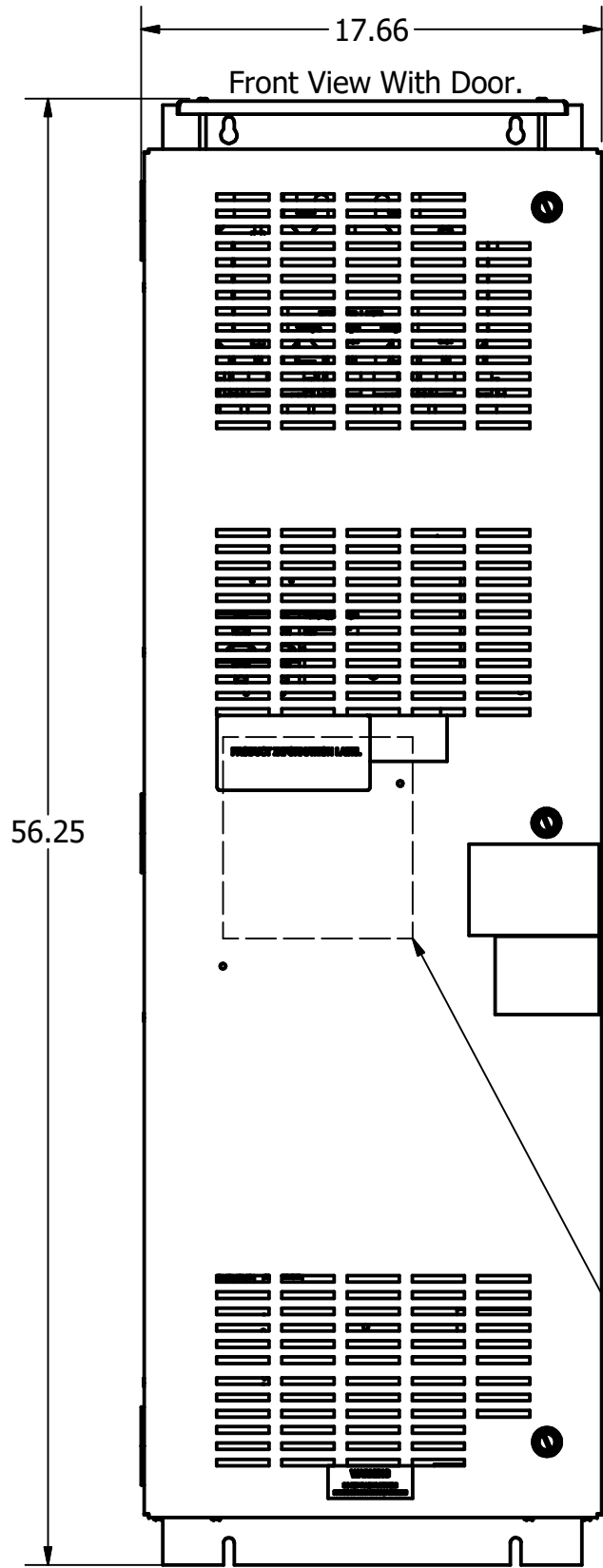
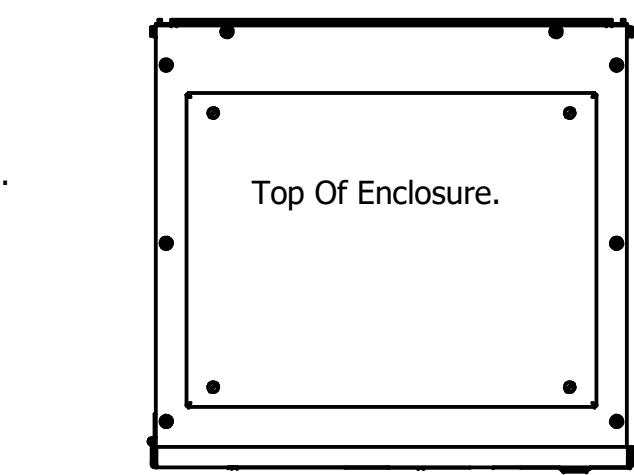
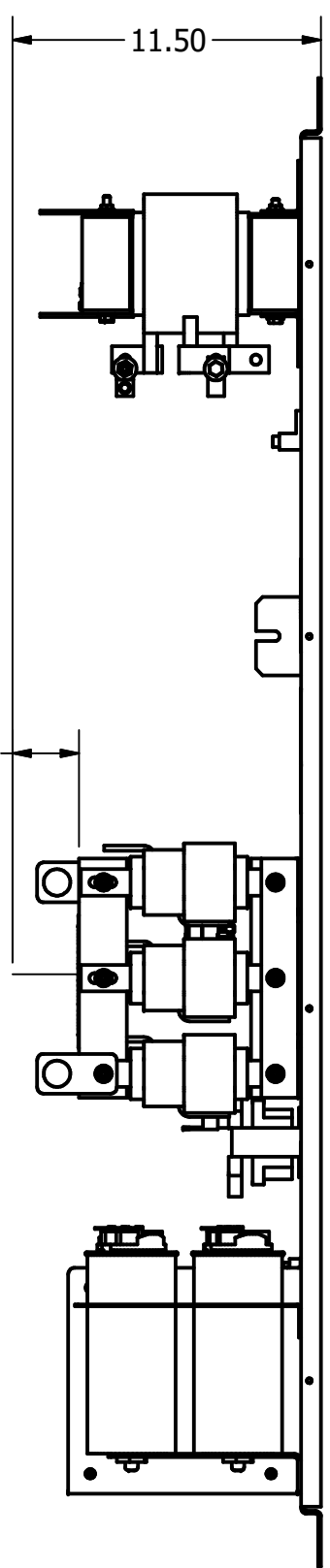
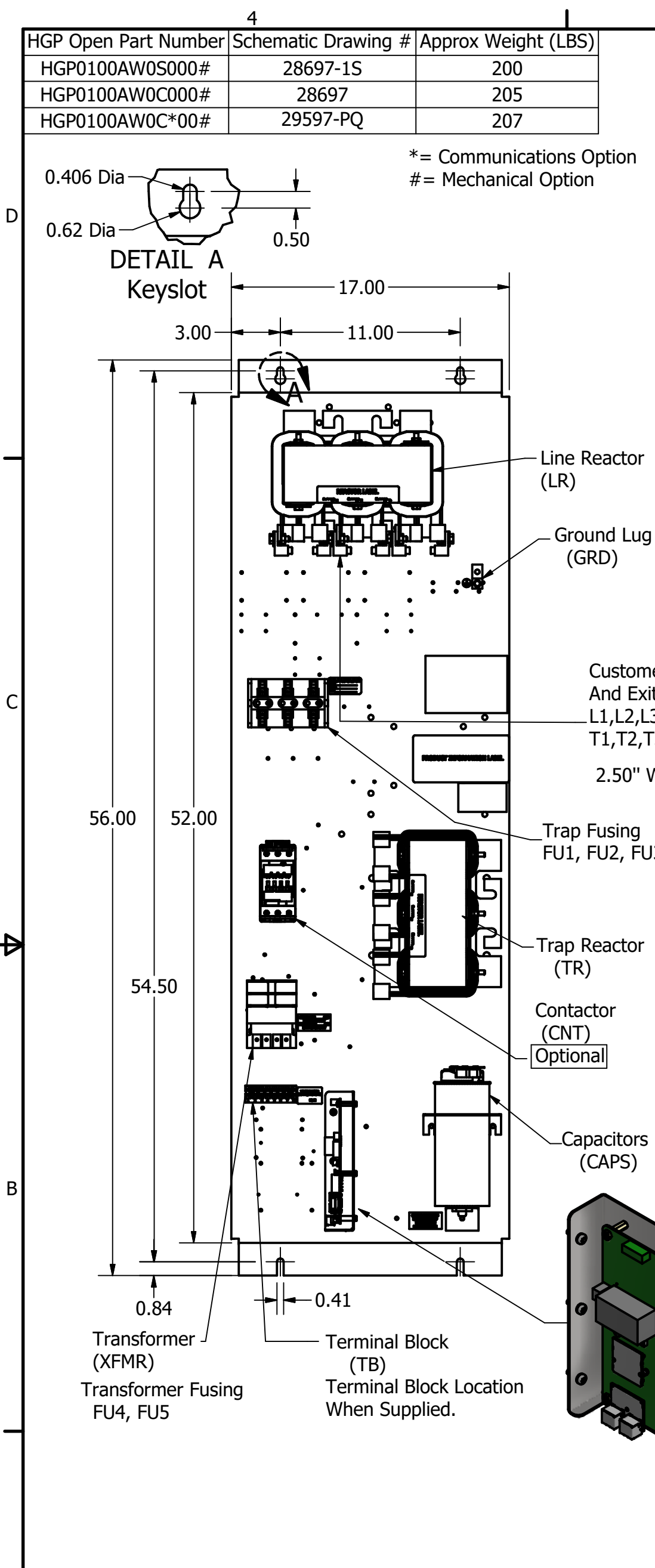
Note: For Torque Information See IOM Manual.
 Customer Connections. L1, L2, L3, T1, T2, T3
 Wire Range: 2/0 AWG to 14AWG.

Ground Lug
 Wire Range: 2/0 to 14 AWG.



*= Communications Option
 #= Mechanical Option

Suggested Area, For Customer Wire Entry And Exit Location.



Note: Customer is responsible for proper cooling of filter components on open panels. Capacitors Maximum Ambient 50°C

HGP0100AW----			
Components	0S000#/ 1S000#	0C000#/ 1C000#	0C*00#/ 1C*00#
Line Reactor (LR)	X	X	X
Trap Reactor (TR)	X	X	X
Capacitor (Cap)	X	X	X
Trap Fusing, FU1, FU2, FU3	X	X	X
Contactor (CNT)		X	X
Transformer (XFMR)		X	X
XFMR Fusing, FU4, FU5		X	X
PQConnect Board			X

*	Communication Options
1	PQconnect W/Modbus RTU over RS485
2	PQconnect W/EtherNET/IP

#	Mechanical Options
0	No Change
T	Thermal Switch
V	Vibration Pads

Customer Is Responsible For Installation to Meet All National And Local Electrical Codes.

Material(s) Shall be RoHS Compliant

THE INFORMATION AND DESIGNS CONTAINED IN THIS DRAWING ARE CONFIDENTIAL AND THE PROPRIETARY PROPERTY OF ALLIED MOTION TECHNOLOGIES INC. AND ITS SUBSIDIARIES. NEITHER THIS DESIGN NOR ANY INFORMATION CONTAINED IN THIS DRAWING MAY BE REPRODUCED OR DISCLOSED TO OTHERS WITHOUT THE EXPRESS WRITTEN CONSENT OF ALLIED MOTION TECHNOLOGIES INC. AND ITS SUBSIDIARIES.

NO	REVISION	DATE	BY	ANGULAR	TOLERANCES (EXCEPT AS NOTED)
L	6868 Add Mechanical Options	11/07/24	JRN	FRACTIONAL ± 1/16	.XX ± .25 .XXX ± .10
K	6489, KTR30A65HG updated.	11/14/2023	DSW	ANGULAR ± 1°	

TCL W132N10611 Grant Drive
 Germantown, WI 53022
 © 2023 TCL, LLC

An Allied Motion Company

HarmonicGuard Passive
 HGP, 100HP, 480/3/60, Open and Type 1

DRN BY: DSW DATE: 10/31/13 SIZE: 105487DG
 SCALE: 1/6 APRVD: C SHT 1 OF 1